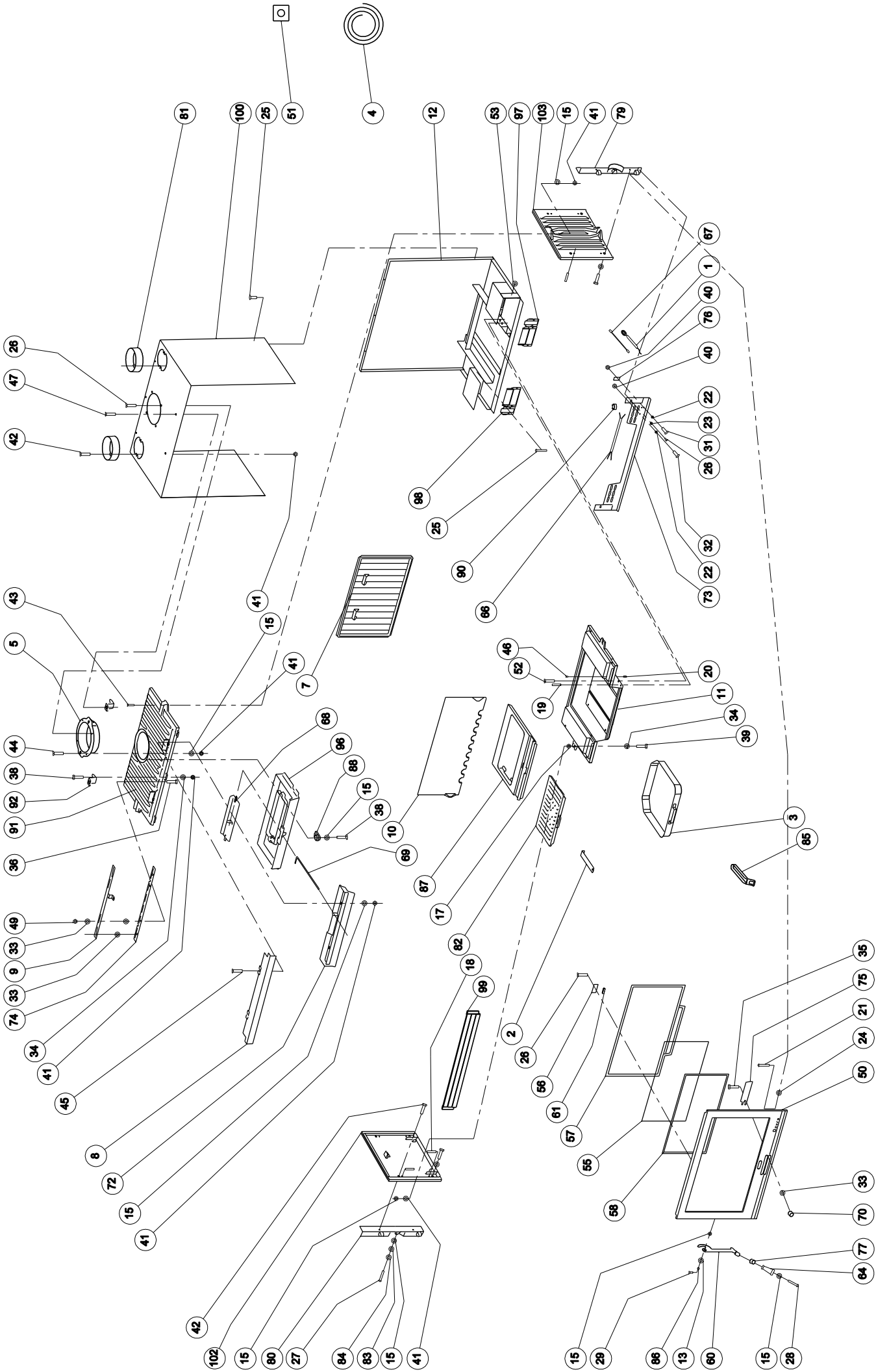




09-93820-000 | 21/04/06

2220



1	70.73015.000	VSET2576CB VENTILATORSET 2576CB (SAM.)	VSET2576CB SET DE VENTILATEUR 2576	VSET2576CB VENTILATOR BOX 2576CB	VSET2576CB LÜFTERSATZ 2576CB (ZSTG.)
2	70.61301.000	61301.0 #02 SCHUDSTANG 2100 KOLENKORF	61301.0 #02 TIGE DE DECENDRAGE 2100	61301.0 #02 RIDDLING ROD 2100	61301.0 #02 RÜTTTELSTANGE 2100
3	70.05215.000	806 ASLADE 2000/2100/2200 ASL.806	806 BAC A CENDRES 2000/2100/2200 ASL.806	806 ASH BOX2000/2100/2200 ASL.806	806 ASCHENKASTEN 2000/2100/2200 ASL.806
4	03.00702.000	AANSLUITKABEL SILICONEN 3X0.75	CABLE	CABLE	KABEL
5	70.00320.020	00320.0 AANSLUITKRAAG	00320.0 BUSELOT	00320.0 FLUE COLLAR	00320.0 ANSCHLUSS STÜTZE
6	70.00381.000	00323.0 AANSLUITKRAAG Ø150 INT. RVS CASSETTE	00323.0 BUSELOT ENCASTRABLE Ø150 INT	00323.0 FLUE COLLAR Ø150 INSIDE RVC CASSETTE	00323.0 RAUCHROHRSTUTZEN Ø150 INT. RVS CASSETTE
7	03.02413.000	ACHTERWAND 2200/2220	PLAQUE ARRIERE 2200/2220	BACK 2200/2220	RÜCKWAND 2200/2220
8	03.03008.002	AFDEKKAP 2210S,2510S	CAPE	COVER PLATE	AFDEKKAP 2210S,2510S
9	02.06104.100	BEDIENING LUCHTS. 2520	TIGE CLAPET D'AIR 2520	HANDLE DRAFT CONTROL	BEDIENING LUCHTS. 2520
10	70.08301.000	08301.0 BINNENPLAAT 10 SERIE	08301.0 PLAQUE INTERIEURE	08301.0 INNER PLATE	08301.0 INNEN PLATTE
11	03.09361.009	BODEMPLAAT 2520/2220	BASE	BOTTOM PLATE	BODENPLATTE 2520/2220
12	02.09344.200	BODEM GEM. 2220 **	BODEM GEM. 2220 **	BODEM GEM. 2220 **	BODEM GEM. 2220 **
13	03.13612.000	BUSJE Ø12XØ8X3.5 *Z	TUBE Ø12XØ8X3.5	BUSHING Ø12XØ8XØ3.5	BUECHSE ?12X?8X?3.5
14	03.16504.000	D125 Ø4XØ9 SLUITRING *	RONDELLE DIN 125 Ø4xØ9	WASHER DIN 125 Ø4xØ9	UNTERLEGSCHIEBE DIN 125 Ø4xØ9
15	70.16502.000	10 ST D125 Ø8XØ17 SLUITRING - 16502.0	10 PC RONDELLE Ø8XØ17 - 16502.0	10 PC WASHER D125 Ø8XØ17 - 16502.0	10 ST D125 Ø8XØ17 UNTERLEGSCHIEBE - 16502.0
16	03.17863.000	D1481 Ø4X16 SPANSTIFT *	GOUPILLE ELASTIQUE	SPRING PIN	D1481 Ø4X16 SPANSTIFT *
17	70.79866.000	Z366 : SLUITNOK PRELUDE	Z366 : TIGE DE FERMETURE PRELUDE	Z366 : LOCKING PIN PRELUDE	Z366 : SPERRBOLZEN PRELUDE
18	70.17210.000	10 st D551 M8X10 STELSCHR.ZGSN	10 p VIS DIN 551 M8x10	10 pc SCREW DIN 551 M8x10	10 st SCHRAUBE DIN 551 M8x10
19	03.17213.000	D551 M8X20 STELSCHR.ZGSN *	DIN 551 M8x20	DIN 551 M8x20	DIN 551 M8x20
20	03.16105.000	D6334 M5XSW8X15 DRAADBUS *	DIN 6334 ENTRETOISE M5XSW8X15	DIN6334 THREADED BUSHING M5XSW8X15	DIN6334 GEWINDEBUECHE M5XSW8X15
21	70.17516.000	10 ST Ø5.9x35 RVS BOLKOPKLINKNAGEL - 17505.0	10 P RIVET Ø6X35 - 17505.0	10 PC RIVET Ø6X35 - 17505.0	10 ST RIVER Ø6X35 - 17505.0
22	03.17604.000	D6798AZ Ø4 TANDV.GESL.BV. *	DIN 6798 Ø4	DIN 6798 Ø4	DIN 6798 Ø4
23	70.17601.000	10 st D6798AZ Ø6 TANDV.GESL.BV	10 p RONDELLE DIN 6798AZ Ø6	10 pc WASHER DIN 6798AZ Ø6	10 st UNTERLEGSCHIEBE DIN 6798AZ Ø6
24	70.17901.000	10 st D7349 Ø6,4XØ17X3 SLUITRING DIK	10 p ROND. D7349 Ø6,4xØ17x3	10 pc WASHER D7349 Ø6,4xØ17x3	10 st UNTERL.SCH.D7349 Ø6,4xØ17x3
25	70.18001.000	10 st D7516A M5X10 BOLCIL.KKOP SNIJSCH	10 p VIS DIN 7516A M5x10	10 pc SCREW DIN 7516A M5x10	10 st SCHRAUBE DIN 7516A M5x10
26	03.18102.000	D7516D M5X12 PLATV.KK.SNIJSCHR *	VIS DIN7516D M5X12	SCREW DIN 7516D M5X12	SCHRAUBE DIN 7516D M5X12
27	70.20301.000	10 st D7985 M8X20 BOLCIL KK SCHROEF	10 p VIS DIN 7985 M8x20	10 pc SCREW DIN 7985 M8x20	10 st SCHRAUBE DIN 7985 M8x20
28	70.20307.000	10 st SCHROEF M8X50	10 p VIS M8X50	10 pc SCREW M8X50	10 st SCHRAUBE M8X50
29	70.18614.041	10 st SCHROEF DIN 7991 M8X20	10 p VIS DIN 7991 M8x20	10 pc SCREW DIN 7991 M8x20	10 st SCHRAUBE DIN 7991 M8x20
30	70.18614.041	10 st SCHROEF DIN 7991 M8X20	10 p VIS DIN 7991 M8x20	10 pc SCREW DIN 7991 M8x20	10 st SCHRAUBE DIN 7991 M8x20
31	03.21407.000	D84 M4X25 SCH.CILK.ZGS *	DIN 84 M4x25	DIN 84 M4x25	DIN 84 M4x25
32	03.21402.041	D84 M4X8 GEZW SCH.CILK.ZGS *	DIN 84 M4x8	DIN 84 M4x8	DIN 84 M4x8
33	70.18701.000	10 st D9021A Ø6XØ18 SLUITRING	10 P RONDELLE DIN 9021A Ø6	10 PC WASHER DIN 9021A Ø6XØ18	10 st UNTERLEGSCHIEBE DIN 9021A Ø6XØ18
34	70.18710.000	10 st SLUITRING 8X25	10 p Ø8xØ25 RONDELLE	10 pc WASHER 8X25	10 st VERSCHUSS 8X25
35	70.19306.000	10 ST M6X25 ZESKANTTAPBOUT	10 p BOULON DIN 933 M6x25	10 pc BOLT DIN 933 M6x25	10 st BOLZEN DIN 933 M6x25
36	70.19307.000	10 st D933 M6X30 ZESKANTTAPBOUT	10 p BOULON DIN 933 M6x30	10 pc BOLT DIN 933 M6x30	10 st BOLZEN DIN 933 M6x30
37	70.19311.000	10 st D933 M8X16 ZESKANTTAPBOUT	10 p BOULON DIN 933 M8x16	10 pc BOLT DIN 933 M8x16	10 st BOLT DIN 933 M8x16
38	70.19314.000	10 st ZESKANT TAPBOUT M8X30	10 p BOULON DIN 933 M8x30	10 pc BOLT DIN 933 M8x30	10 st BOLZEN DIN 933 M8x30
39	70.19316.000	10 st ZESKANT TAPBOUT M8X40	10 p BOULON DIN 933 M8x40	10 pc BOLT DIN 933 M8x40	10 st BOLZEN DIN 933 M8x40
40	03.19404.000	D934 M4 ZESKANTMOER *	ECROU DIN 934 M4	NUT DIN 934 M4	MUTTER DIN 934 M4
41	70.19401.000	10 ST D934 M8 ZESKANTMOER 19401.0	10 P ECROU DIN 934 M8 19401.0	10 PC NUT DIN 934 M8 19401.0	10 ST MUTTER DIN 934 M8 19401.0
42	03.19731.000	D963 M8X16 PLATV.SCHR.ZGS *	VIS DIN 963 M8x16	SCREW DIN 963 M8x16	SCHRAUBE DIN 963 M8x16
43	70.19734.000	10 st D963 M8X35 PLATV.SCHR.ZGS#	10 p VIS DIN 963 M8x35	10 pc SCREW DIN 963 M8x35	10 st SCHRAUBE DIN 963 M8x35
44	03.19737.000	D963 M8X60 PLATV.SCHR.ZG *	VIS DIN 963 M8x60	SCREW DIN 963 M8x60	SCHRAUBE DIN 963 M8x60
45	03.19738.000	D963 M8X70 PLATV.SCHR.ZGS *	VIS DIN 963 M8x70	SCREW DIN 963 M8x70	SCHRAUBE DIN 963 M8x70
46	70.19801.000	10 st M5X10 PLATV.SCHR.KK	10 p VIS DIN 965 M5x10	10 pc SCREW DIN 965 M5x10	10 st SCHRAUBE DIN 965 M5x10

47	03.19805.000	D965 M6X16 PLATV.SCHR.KK *	VIS DIN 965 M6x16	SCREW DIN 965 M6x16	SCHRAUBE DIN 965 M6x16
48	70.26363.000	ZIJGLAS SONATA	VITRE CÔTE SONATA	GLASS SIDE SONATA	VERPACKUNG GLAS
49	70.20001.000	10 st ZELFB.MOER CLEVELOCK	10 p M6 ECROU CLEVELOCK	10 pc LOCKING NUT DIN 980 M6	10 st SICHERUNGSMUTTER DIN 980 M6
50	70.15480.020	15480.0 DEURSET 2210 S	15480.0 JEU DE PORTE 2210 S	15480.0 DOOR SET 2210 S	15480.0 TÜR ZUSAMMENSTELLUNG 2210 S
51	70.15606.000	DIMMER ESB 15PV 15606.0	VARIATEUR ESB 15PV 15606.0	DIMMER ESB 15PV 15606.0	HELLIGKEITSREGLER ESB 15PV 15606.0
52	70.19701.000	10 st SCHROEF M8X25	10 p VIS M8X25	10 pc SCREW M8X25	10 st SCHRAUBE M8X25
53	03.22001.000	DOORVOERTULE SR6P4	TULLE	GROMMETS SR6P4	DOORVOERTULE SR6P4
54	03.19448.000	FELSMOER ROND M8X3	ECROU	NUT	MUTTER
55	70.26012.000	26012.0 GLAS 2200/2210/2220	26012.0 VITRE 2200/2210/2220	26012.0 GLASS 2200/2210/2220	26012.0 GLAS 2200/2210/2220
56	70.26101.041	4ST SET GLASBEV.; 20X20MM	4PC SET FIXATION VITRE 20X20	4PC SET GLASS RETAINER 20X20	4ST SET GLAS BEHÄLTER 20X20
57	70.79922.000	Z422 : GLASVEZELKOORD 10 MM KOORD-10	S422 : JOINT FIBRE CERAMIQUE 10 MM KOORD-10	B422 : GLASS FIBER ROPE 10 MM KOORD-10	S422 : GLASFASER SCHNUR 10 MM KOORD-10
58	70.79870.000	SERVICE KIT 4.0M GLASVEZELKOORD 6MM - TU.SK6	SERVICE KIT 4.0M JOINT FIBRE CERAMIQUE 6MM - SK6	SERVICE KIT 4.0M GLASS FIBER ROPE 6MM -TU.SK6	SERVICE KIT 4.0M GLASFABER SCHNUR 6MM - TU.SK6
60	70.27218.020	S27218.0 GRENDDEL 750/10-SERIE	S27218.0 LOQUET 750/10-SERIE	S27218.0 LATCH 750/10-SERIE	S27218.0 GRIFF 750/10-SERIE
61	04.66710.100	U-PROFIEL ZWART RUBBER	U-PROFILE NOIRE CAOUTCHOUC	U-FORMED BLACK RUBBER	U-PROFIL SCHWARZ GUMMI
64	03.27507.000	HANDVAT HOUT 500 KLEIN	POIGNEE EN BOIS 500 PETIT	HANDLE WOOD 500 SMALL	TUERGRIFF HOLZ 500 KLEIN
65	03.28833.000	HOUDER DOORVOERTULE 2520	TENEUR	HOUDER DOORVOERTULE 2520	HOUDER DOORVOERTULE 2520
66	03.30120.200	KABEL 2520 M/M/KR/TH	CABLE	CABLE 2520 M/M/KR/TH	KABEL 2520 M/M/KR/TH
67	03.30109.000	KABEL KROONKL/SCHAKELAAR	CABLE	CABLE TERMINAL SWITCH	KABEL KRONEKLAMMER/SCHALTER
68	70.32005.000	KLEP 2020,2520 32005.0	CLAPET 2020 2520 32005.0	DAMPER 2020 2520 32005.0	KLAPPE 2020 2520 32005.0
69	70.32204.000	KLEPSTANG 2020/2520 32204.0	TIGE DE CLAPET 2020/2520 32204.0	DAMPER ROD 2020/2520 32204.0	KLAPPE STANGE 2020/2520 32204.0
70	70.33020.020	33020.0 KNOP GG 2510S	33020.0 BOUTON 2510S	33020.0 KNOB DRAFT CONTROL 2510S	33020.0 KNOPF 2510S
71	03.21302.000	LASSTIFT CD Ø6X10 STAAL/VERKOPERD *	CHEVILLE	WELD PIN	LASSTIFT CD Ø6X10 STAAL/VERKOPERD *
72	03.37324.105	LUCHTGELEIDER 2520	CONDUCTEUR D'AIR 2520	AIR DEFLECTOR 2520	LUFT LEITER 2520
73	99.99999.990	PRULLENBAK VERVALLEN ARTIKELNRS.	PRULLENBAK VERVALLEN ARTIKELNRS.	PRULLENBAK VERVALLEN ARTIKELNRS.	PRULLENBAK VERVALLEN ARTIKELNRS.
74	02.37932.200	LUCHTSCHUIF BOVEN	REGLETTE D AIR DESSUS	DRAFT CONTROL	LUFT SCHIEBER OBEN
75	70.37901.021	37901.0 LUCHTSCHUIF ONDER 2100 KOLEN ZWART	37901.0 REGLETTE D'AIR 2100 NOIR	37901.0 DRAFT CONTROL BLACK	37901.0 LUFTSCHIEBER SCHWARZ
76	03.40001.000	LUSTERBLOK 3 POLIG KERAMISCH	SUCRE 3 PÔLES	TERMINAL 3-FASE	LÜSTERKLEMME 3 POLIG KERAMISCH
77	03.46527.041	OPVULSTUK GEZWART 450/750 *Z	CONNECTION PIÈCE	CONNECTOR PIECE	TEIL FUER TUEGRIFF
79	03.58409.005	SCHARNIERLIJST LINKS 2220	CADRE DE CHARNIERE	SCHARNIERLIJST LINKS 2220	SCHARNIERLIJST LINKS 2220
80	03.58408.005	SCHARNIERLIJST RECHTS 2220	CADRE DE CHARNIERE	SCHARNIERLIJST RECHTS 2220	SCHARNIERLIJST RECHTS 2220
81	70.00335.020	300-8 SCHOORSTEENFLENS Ø125 UITWENDIG	300-8 BRIDE DE CHEMINÉE Ø125 EXTÉRIEUR	300-8 CHIMNEY CONECTOR Ø125 OUTSIDE	300-8 SCHORNSTEINFLANGE Ø125 AUßERLICH
82	70.61101.000	61101.1 SCHUDROOSTER 2100	61101.1 GRILLE DE DECENDRAGE 2100	61101.1 RIDDLING GRATE 2100	61101.1 RÜTTELROST 2100
83	70.13617.000	10 st BUSJE BORSTBOUT Ø16XØ10.2X7.5 - SLP15	10 p ENTRETOISE Ø16XØ10.2X7.5 - SLP15	10 pc BUSHING Ø16XØ10.2X7.5 - SLP15	10 st BÜCHSE Ø16XØ10.2X7.5 - SLP15
84	03.13616.000	BUS SLUITING	TUBE DE FERMETURE	SLP22 LATCH BUSHING 2100	BÜCHSE VERSCHUSS
85	70.27226.020	SLT5-/01 KOUDE HAND ASBAK	SLT5-/01 MAIN FROIDE BAC A CENDRES3	SLT5-/01 COLD HAND ASHPAN	SLT5-/01 KALTE HAND ASCHENKASTE
86	70.64611.000	10 st SNELBORGER - 64611.0	10 pc RONDELLE A11 STARLOCK - 64611.0	10 pc WASHER A11 STARLOCK - 64611.0	10 st UNTERLEGSCHIEBE A11 STARLOCK - 64611.0
87	70.56301.000	STEUN SCHUDROOSTER 2100 56301.0	SUPPORT GRILLE DE DECENDRAGE 2100 56301.0	SUPPORT RIDDLING GRATE 2100 56301.0	STÜTZE RÜTTELROST 2100 56301.0
88	70.66010.000	66010.0 STEUN VLAMPLAAT 2020.2520	66010.0 SUPPORT DEFLECTEUR 2020.2520	66010.0 SUPPORT BAFFLE PLATE 2020.2520	66010.0 STÜTZE FLAMLEITPLATTE 2020.2520
90	70.68203.000	68203.0 THERMOSTAAT KLIKSONDE (vent)	68203.0 THERMOSTAT	68203.0 THERMOSTAT	68203.0 THERMOSTAT
91	03.69118.105	TOPPLAAT 2220,2520	PLAQUE DESSUS	TOPPLATE	TOPPLATTE 2220,2520
92	03.71314.005	TUSSENSTUK 2020,2220,2520	TUSSENSTUK 2020,2220,2520	INTERMEDIATE PIECE 2020,2220,2520	HINTEN 2020,2220,2520
96	70.76110.000	76110.0 VLAMPLAAT 2520	76110.0 DEFLECTEUR 2520	76110.0 BAFFLE PLATE 2520	76110.0 FLAMLEITPLATTE 2520
97	70.73006.000	VNT2R VENTILATOR 2200 RECHTS	VNT2R VENTILATEUR 2200 DROIT	VNT2R FAN STRAIGHT 2200 RIGHT	VNT2R VENTILATOR GERADE RECHTS
98	70.73005.000	VNT2L VENTILATOR 2200 LINKS	VNT2L AERATEUR GAUCHE 2200	VNT2L FAN LEFT 2200	VNT2L VENTILATOR LINKS 2200
99	70.77051.000	77051.0 VUURKORF 2200S/2500S/2620SC	77051.0 GARDE-BOUCHES 2200S/2500S/2620SC	77051.0 LOG RETAINER 2200S/2500S/2620SC	77051.0 STEHROST 2200S/2500S/2620SC
100	03.79132.000	ZIJKANT KAST 2220 **	PLAQUE COTE	ZIJKANT KAST 2220 **	ZIJKANT KAST 2220 **

102 03.79533.007 ZIJWAND RECHTS 2220  
103 03.79533.007 ZIJWAND RECHTS 2220

ZIJWAND RECHTS 2220  
ZIJWAND RECHTS 2220

ZIJWAND RECHTS 2220  
ZIJWAND RECHTS 2220

ZIJWAND RECHTS 2220  
ZIJWAND RECHTS 2220