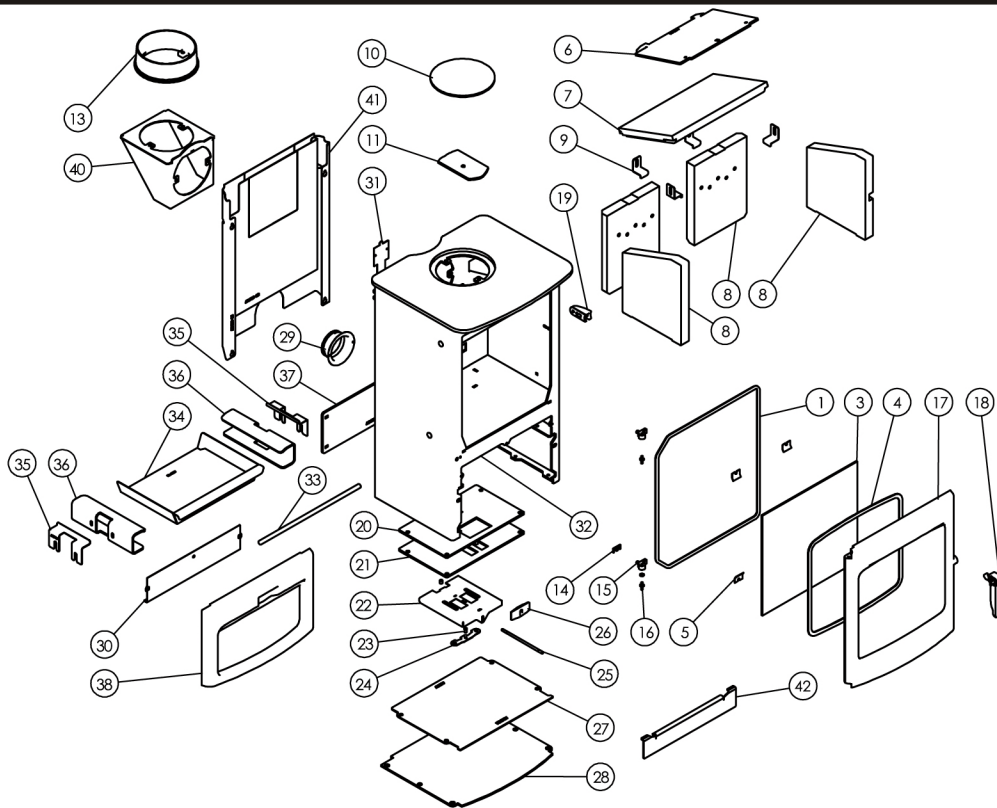




Issue D



Item	Part No.	Description
1	008/AB035	Rope Door Seal .....
2	008/FW29	Door Seal Adhesive .....
3	006/AB018	Glass (Inc Seal) .....
4	008/AY45	Glass Seal .....
5	004/KV23	Glass Retainer .....
6	010/AB045	Upper Throat Plate .....
7	011/AB031	Throat Plate .....
8	011/AB028S	Set of Fire Bricks .....
9	004/XV30	Brick Bracket .....
10	012/TW09	Blanking Plate .....
11	010/AY51	Clamping Plate .....
12*	008/NV38	Flue Fixing Rope Seal .....
13#	002/CH12B	Flue Collar .....
14	004/BR021	Hinge Shim .....
15	002/BR020	Hinge .....
16	008/ST068/2	Hinge Pin Set .....
17#	003/AB001A	Door Assembly .....
18#	003/AB012A	Door Handle .....
19#	003/AB055A	Latch Receiver .....
20	008/AB110	Air Control Gasket .....
21	010/AB130	Air Control Plate .....

Item	Part No.	Description
22	004/AB115	Slider .....
23	008/ES36/01	Brass Ball Catch .....
24	004/BR015	Clicker Retainer Plate .....
25	004/BR016	Control Rod .....
26	008/EZ105	Air Control Handle .....
27	010/AB077	Base Cover Plate .....
28#	010/AB043	Store Stand Baseplate .....
29	004/CR048	Air Inlet Spigot .....
30	004/AB057	Airbox Cover .....
31	012/AB011	Serial No. Label .....
32#	001/AB010	Firebox .....
33	002/AB008	Front Fence .....
34	004/AB017	Ashpan .....
35	004/AB044	Brick Retainer .....
36	010/AB016	Side Plate .....
37	010/AB085	Store Stand Backplate .....
38#	003/AB002	Front Lower Casting .....
39*	010/EW51	Ash Carrier (Optional Extra) .....
40#	010/TW33	Vert Rear Flue Adaptor (Opt'l Extra) ...
41#	010/AB080	Heat Shield (Optional Extra) .....
42	010/AB006	Ash Retainer (Optional Extra) .....

[www.pieces-de-poele.com](http://www.pieces-de-poele.com)

\*These items are not shown on the drawing.  
 # Please specify colour when ordering Prices are shown in pounds sterling with vat at 20% They are correct at the date shown but may be subject to change without notice. E. & O.E These prices are subject to a carriage charge

To obtain spare parts please contact your local stockist giving Model, Part No. and Description. In case of difficulty contact the manufacturer at the address shown. This drawing is for identification purposes only.

