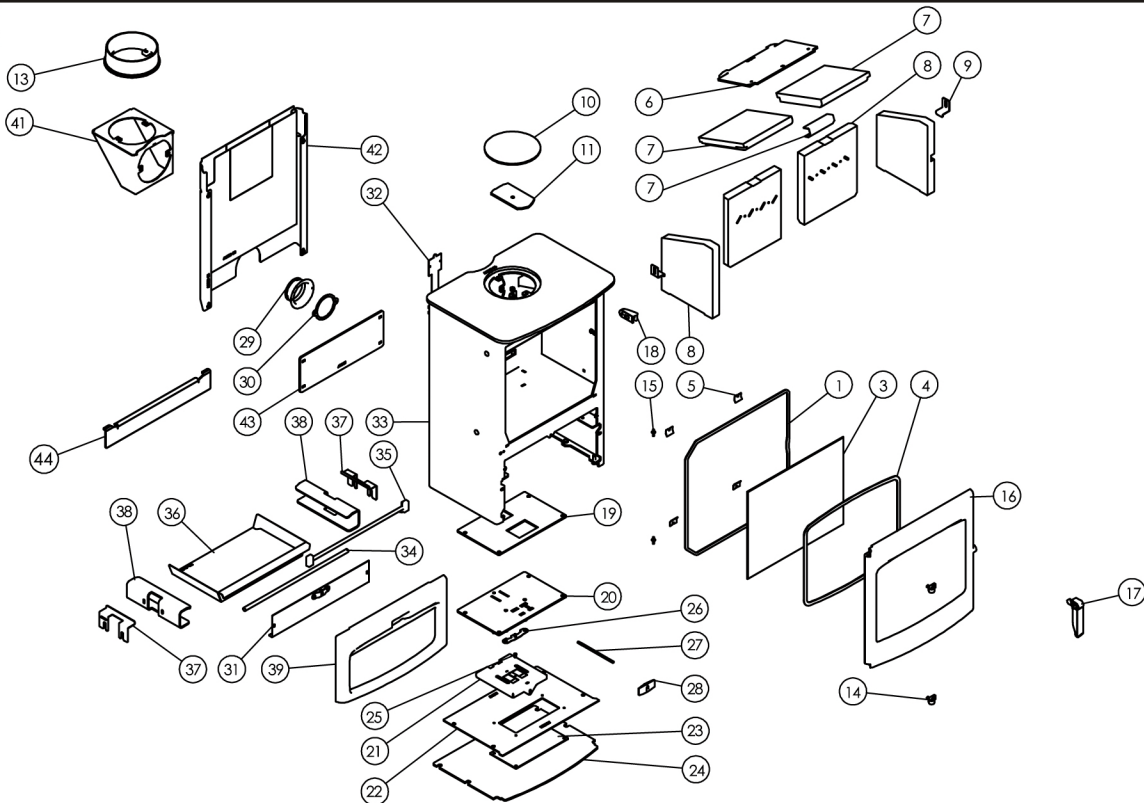




Issue E



| Item | Part No. | Description |
|------|-------------|--|
| 1 | 008/AC035 | Rope Door Seal (Inc Adhesive) |
| 2* | 008/FW29 | Door Seal Adhesive |
| 3 | 006/AC018 | Glass (Inc Seal) |
| 4 | 008/AY45 | Glass Seal |
| 5 | 004/KV23 | Glass Retainer |
| 6 | 010/AC042 | Upper Throat Plate |
| 7 | 011/AC031S | Set of Throat Plate Bricks Inc. Bracket .. |
| 8 | 011/AC028S | Set of Fire Bricks |
| 9 | 004/XV30 | Brick Bracket |
| 10 | 012/TW09 | Blanking Plate |
| 11 | 010/AY51 | Clamping Plate |
| 12# | 008/NV38 | Flue Fixing Rope Seal |
| 13# | 002/CH12B | Flue Collar |
| 14 | 002/AC020 | Hinge |
| 15 | 008/ST073/2 | Hinge Pin Set |
| 16# | 003/AC001A | Door Assembly |
| 17# | 003/AB012A | Door Handle |
| 18# | 003/AB055A | Latch Reciever |
| 19 | 008/AB110 | Air Control Gasket |
| 20 | 010/AC130 | Air Control Plate |
| 21 | 004/AC115 | Slider |
| 22 | 010/AC077 | Base Cover Plate |

| Item | Part No. | Description |
|------|-------------|--|
| 23 | 010/AC078 | Base Blanking Plate |
| 24# | 010/AC043 | Store Stand Base Plate |
| 25 | 008/ES36/01 | Brass Ball Catch |
| 26 | 004/BR015 | Clicker Retainer Plate |
| 27 | 004/BR016 | Control Rod |
| 28 | 008/EZ105 | Air Control Handle |
| 29 | 010/CR048/S | Air Inlet Spigot |
| 30 | 008/CR063 | Air Inlet Gasket |
| 31 | 004/AC057 | Airbox Cover |
| 32 | 012/AC011 | Serial No. Label |
| 33# | 001/AC010 | Firebox |
| 34 | 010/AC007 | Front Fence Bar |
| 35 | 002/AC008 | Front Fence |
| 36 | 004/AC017 | Ashpan |
| 37 | 004/AB044 | Brick Retainer |
| 38 | 010/AB016 | Side Plate |
| 39# | 003/AC002 | Front Lower Casting |
| 40* | 010/EW51 | Ash Carrier (Optional Extra) |
| 41# | 010/TW33 | Vert Rear Flue Adaptor (Opt'l Extra) ... |
| 42# | 010/AC080 | Heat Shield (Optional Extra) |
| 43# | 010/AB085 | Store Stand Back Plate |
| 44 | 010/AC006 | Ash Retainer (Optional Extra) |

*These items are not shown on the drawing.

Please specify colour when ordering. All prices shown include despatch with a 20% VAT. Prices correct as of the date shown but may be subject to change without notice. E. & O.E These prices are subject to a carriage charge.

www.pieces-de-poele.com

To obtain spare parts please contact your local stockist giving Make, Part No. and Description. In case of difficulty contact the manufacturer at the address shown. This drawing is for identification purposes only.

