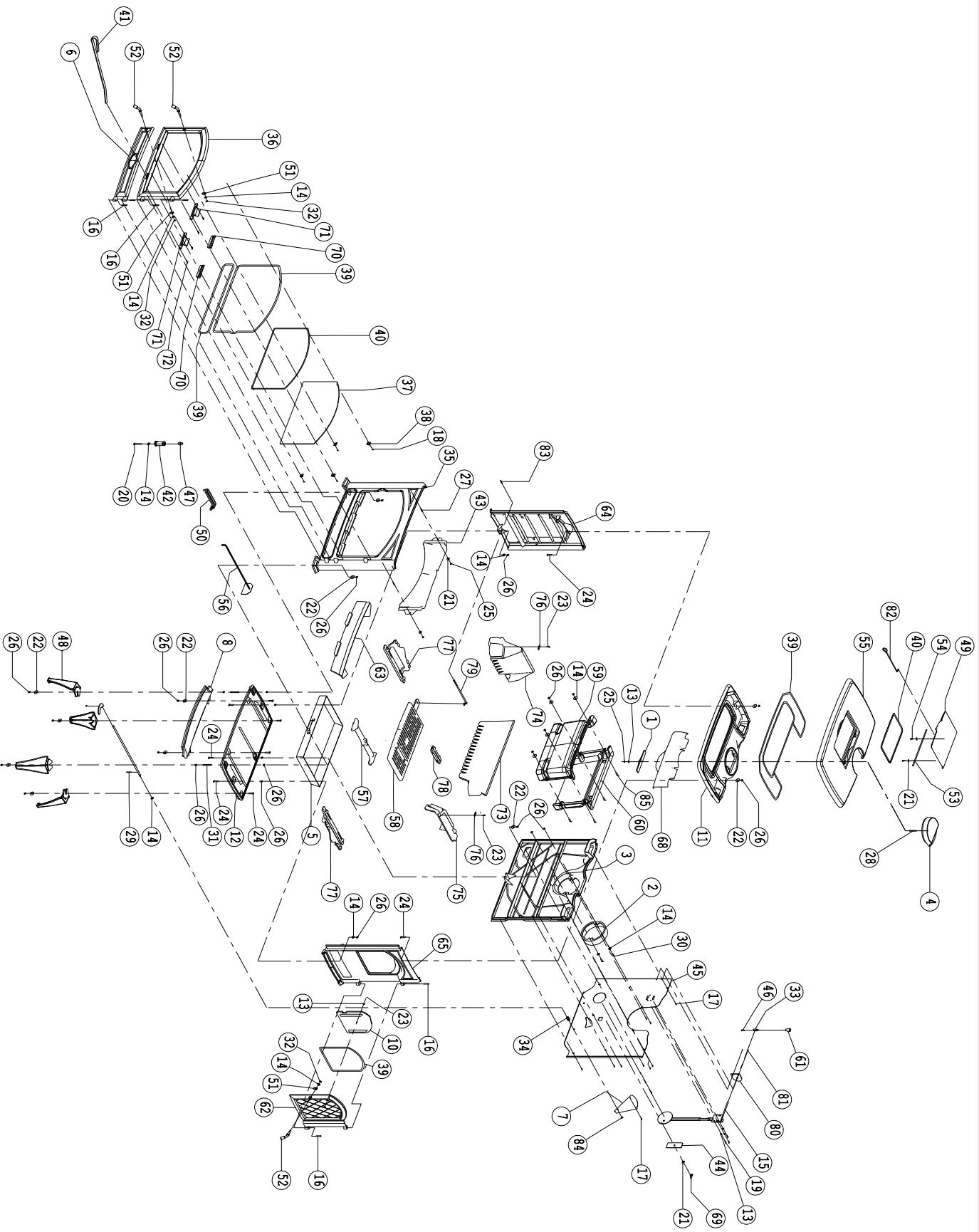




09.94248.000 | 29/10/09  
760GK



| N° schema | Intitulé                                     | Référence    |
|-----------|--|--------------|
| 2         | BUSE Ø150MM INTÉRIEUR 00338.0                | 70.00338.020 |
| 5         | 05224.0 BAC A CENDRES 760 CB                 | 70.05224.000 |
| 6         | PORTE DE CENDRIER 760 CB                     | 70.15871.020 |
| 10        | 08210.1 PORTE INTERIEUR 760CB                | 70.08210.000 |
| 13        | 10 P RONDELLE D125 Ø6XØ12                    | 70.16501.000 |
| 15        | THERMOSTAT 640GM/760GM/TAI                   | 70.68228.000 |
| 17        | 10 p SCREW DIN 7516A M6x12                   | 70.18002.000 |
| 19        | 10 p D7981B 4.8X16 CIL.KK PL.SCHR *          | 70.18413.000 |
| 20        | 10 p VIS M8X50                               | 70.20307.000 |
| 24        | 10 p BOULON DIN 933 M8x30                    | 70.19314.000 |
| 29        | 10 p CLAVETTE DIN 94 Ø2.5x25                 | 70.19610.000 |
| 36        | 15870.0 PORT FACADE 760CB                    | 70.15870.020 |
| 37        | VITRE 760CB 515X319X4R 26309.0               | 70.26309.000 |
| 41        | tisonnier charbon                            | 70.52103.071 |
| 48        | 52244.0 PIED 760CB                           | 70.52244.020 |
| 49        | COUVERCLE 760 GM                             | 70.15343.020 |
| 50        | SLT5-/01 MAIN FROIDE BAC A CENDRES3          | 70.27226.020 |
| 52        | PIECE DE FERMETURE 450/500/750/NOIRE 64221.0 | 70.64221.041 |
| 53        | TIGE 760GM                                   | 70.65439.000 |
| 54        | 10 p VIS DIN 7985 M6X12                      | 70.20311.041 |
| 55        | PLAQUE SUPERIEURE 760GM                      | 70.69179.020 |
| 57        | SUPPORT DE GRILL 760GM                       | 70.56322.000 |
| 58        | GRILLE DE DECENDRAGE 760 GM                  | 70.61113.000 |
| 59        | BUNK760 LA CUVETTE 760GM                     | 70.13401.000 |
| 61        | BOUTON REGLETTE D'AIR KNP181                 | 70.33026.000 |
| 62        | PORTE A CHARGER 760GM                        | 70.15869.020 |
| 63        | GARDE-BUCHES POUR 760GM                      | 70.77079.020 |
| 66        | POIGNEE REGLETTE DAIR                        | 70.27242.000 |
| 68        | RECUPERATEUR 640/760                         | 70.77909.000 |
| 73        | GARDE-BUCHES ARRIERE 760GM                   | 70.77062.000 |
| 74        | GARDE-BUCHE GAUCHE 760GM                     | 70.77063.000 |
| 75        | GARDE-BUCHES DROITE 760GM                    | 70.77064.000 |
| 77        | SUPPORT DE GRILLE GAUCHE DROITE 760GM        | 70.56323.000 |
| 79        | TIGE DE DECENDRAGE 760GM                     | 70.61314.000 |
| 82        | HAAK04 - TISSONIER MAZOUT                    | 70.59202.043 |
| 83        | 33043.0 BOUTON TIGE DE DECENDRAGE 250        | 70.33043.041 |
| 84        | 10 p RONDELLE A8 STARLOCK                    | 70.64608.000 |